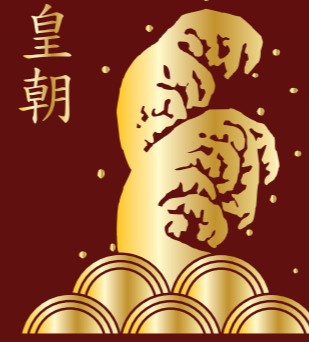


皇朝



*Royal China  
Harrow-on-the-Hill*

*Royal China Harrow-on-the-Hill*



廚師精選

148-150 Station Road, Harrow-on-the-Hill HA1 2RH  
Tel: 020 8863 8359  
[www.royalchinagroup.co.uk](http://www.royalchinagroup.co.uk)



Chef's Special Menu 

Royal China Group consists of London's most authentic and prestigious Chinese restaurants, including the luxurious and critically-acclaimed **Royal China Club**.

Situated in prime areas of London, the restaurants are centrally located on **Baker Street, Canary Wharf, Harrow-on-the-Hill, and Chinatown**. Outside our operations in London, we have branches in **Dubai, China and Hong Kong**, where we have earned a distinguished reputation.

The restaurants all have elegant décor, contrasting rich golden hues with striking red and black features. Lacquered murals depicting an ornate Chinese illustration create a focal point within each of the restaurants. The capacity of the restaurants varies in size, ranging from 55 to 150 covers.

The Royal China collection of restaurants offer traditional Hong Kong Cantonese dishes, while Royal China Club provides an exclusive experience combining European ingredients within authentic Chinese cuisine. Royal China is renowned for its Dim Sum, served daily from noon until 5pm which includes Royal China Lotus Leaf Fried Rice; and Signature Lava Yolk Custard Bun. Each restaurant has its dedicated residence Dim Sum Chef, as well as a Head Chef.

Each restaurant has a dedicated chef special menu with signature dishes created by the restaurant's individual Head Chefs. These dishes are refreshed frequently, while seasonal dishes are changed throughout the year.

Thank you for choosing Royal China. We endeavour to provide all our customers the ultimate Chinese cuisine experience.

For any food allergies, intolerances, or dietary requirements, please inform a member of staff when placing your order. Some of our dishes are cooked from delivery of materials containing Genetically Modified (GM) products or contain E number food colouring which may have an adverse effect on activity and attention in children.

**Customer Notice**

- The first plate of chilli oil/ chilli sauce is complimentary (per table)
- Additional servings of sauces are chargeable at £3 per plate
- Hot water is chargeable at £1 per head
- Takeaway containers for dine-in customers are chargeable at 50p each

All prices include VAT. A discretionary 13% gratuity will be added to your bill.

Photo are for illustrative purposes only.

皇朝小炒皇   
Stir-fried Chinese Chive with Dried Shrimps and Shredded Duck  
£12.80

榨菜蒸牛肉  
Steamed Beef with Preserved Vegetables  
£14.80

涼拌雞絲  
Shredded Chicken (Served Cold)  
£14.80

泰式咖喱雞扒   
Thai-Style Curry Chicken  
£14.80

孜然羊肉   
Stir-fried Lamb with Cumin  
£15.80

蝦球錦繡時蔬  
King Prawns with Seasonal Vegetables  
£16.80

韭菜煎蠔餅   
Chinese Chive and Oyster Omelette  
£16.80

瑤柱扒豆苗  
Stir-fried Dau Miu with Dried Scallops  
£18.80

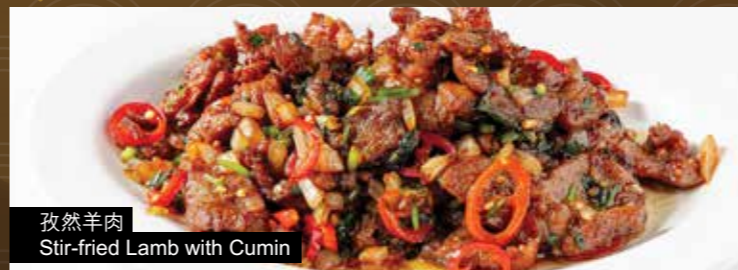
蜜汁羊仔扒  
Lamb Chops in Honey Sauce  
£18.80



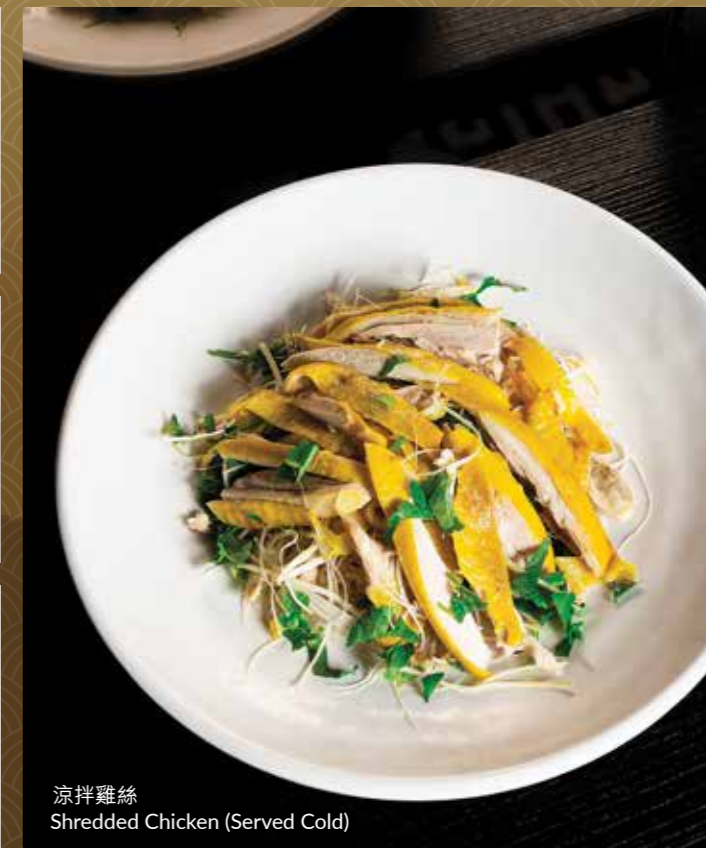
皇朝小炒皇  
Stir-fried Chinese Chive with Dried Shrimps and Shredded Duck



榨菜蒸牛肉  
Steamed Beef with Preserved Vegetables



孜然羊肉  
Stir-fried Lamb with Cumin



涼拌雞絲  
Shredded Chicken (Served Cold)



蝦球錦繡時蔬  
King Prawns with Seasonal Vegetables



蜜汁羊仔扒  
Lamb Chops in Honey Sauce



瑤柱扒豆苗  
Stir-fried Dau Miu with Dried Scallops



泰式咖喱雞扒  
Thai-Style Curry Chicken



韭菜煎蠔餅  
Chinese Chive and Oyster Omelette